

PART OF THE NE.1/4, OF SECTION 30, T.7N., R.1E., S.L.B. & M.
LIBERTY GRANDE SUBDIVISION

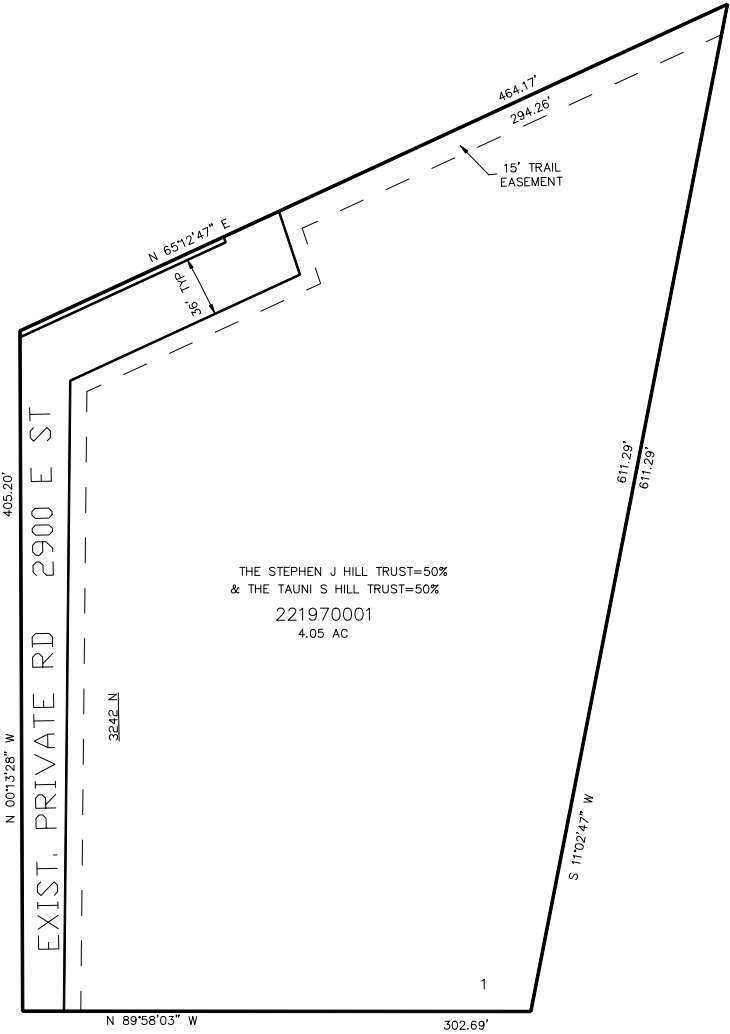
IN WEBER COUNTY
SCALE 1" = 60'

TAXING UNIT: 36

SEE PAGE 25

SEE PAGE 25

SEE PAGE 25



10' UTILITY & DRAINAGE EASEMENTS EACH
SIDE OF PROPERTY LINES AS INDICATED
BY DASHED LINES EXCEPT AS OTHERWISE
SHOWN.

SEE PAGE 25

FOR COMPLETE ENG DATA SEE
ORIGINAL DEDICATION PLAT IN
BOOK 56, PAGE 10 OF RECORDS.